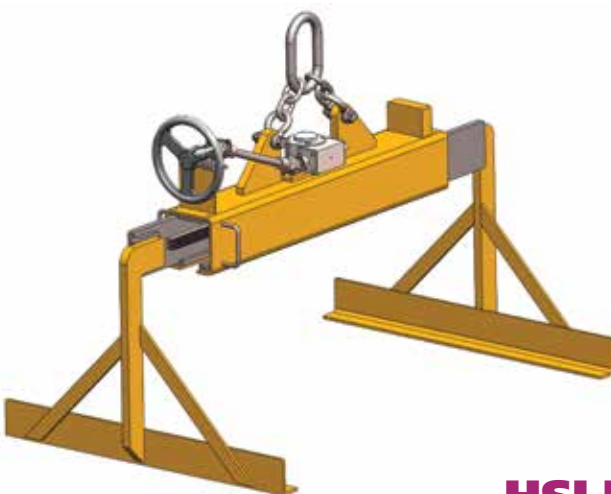
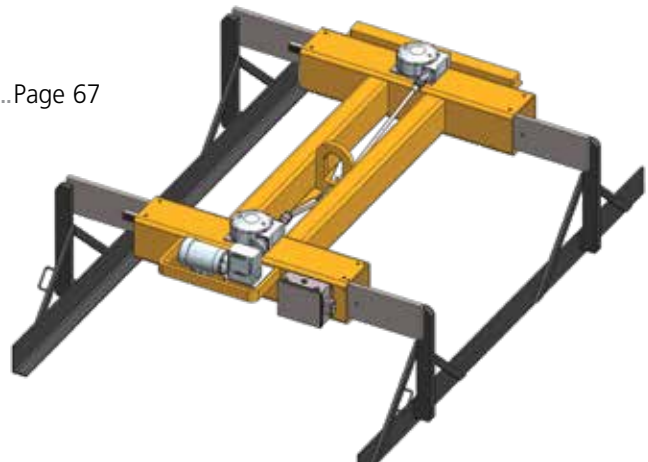


## HSLHD

SHEET LIFTER HEAVY DUTY .....Page 66

## HMSLHD

MOTORIZED SHEET LIFTER HEAVY DUTY .....Page 67



## HSLLD

SHEET LIFTER LIGHT DUTY .....Page 68

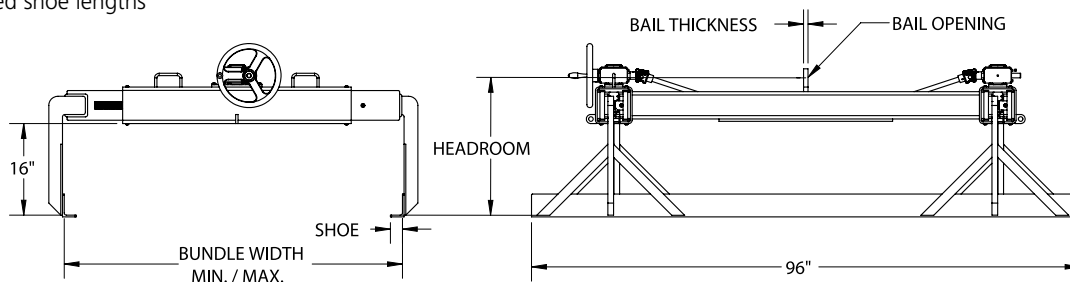
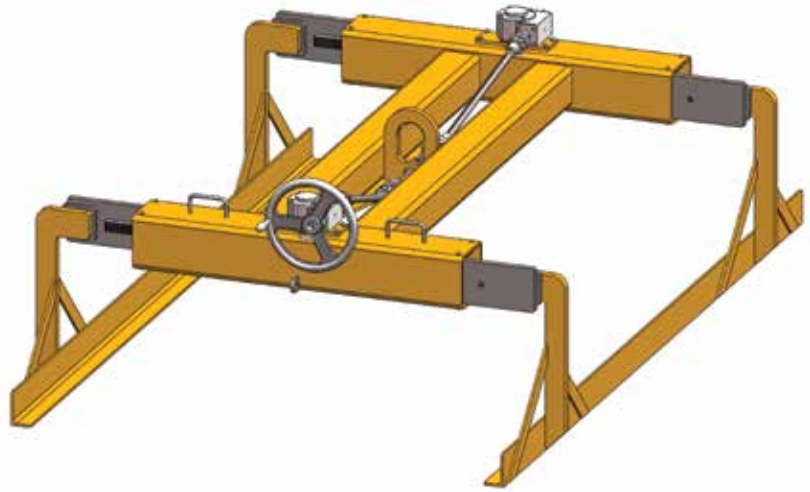
## HSLHD SHEET LIFTER HEAVY DUTY

### FEATURES

- This style of lifter is designed to lift and carry various sizes of bundles, sheets, and/or plates.
- Standard heavy duty direct drive, self-locking, machined rack and pinion leg adjustment.
- Standard heavy duty square tube H-Frame design.
- Standard heavy duty hand-wheel package with slip clutch to prevent damage to gearboxes from over adjustment.
- Easily maintained low headroom design.
- Engineered and manufactured to ASME B30.20 & BTH-1 Design Category B Service Class 2.
- 100% of ALL sheet lifters are Proof-Tested to 125% capacity and certificates supplied at No Additional Charge.
- Made in USA.

### OPTIONS

- Chain wheel leg drive
- Extended hand wheel or chain wheel
- Extended shoe lengths
- Extended leg heights
- Load chains with plate hooks
- Load chains standard on all units with load width capabilities of 72" or greater



Model #	Capacity (US Tons)*	Dimensions (Inches)								Weight (Lbs.)
		Bundle Width Min/Max	Headroom	Shoe Width	Min. Aisle	Bail Height	Bail Opening Width	Bail Opening Height	Bail Thickness	
HSLHD-3-48	3	16/48	26	2.63	9	1.5	3	5	0.75	1370
HSLHD-3-60	3	16/60	26	2.63	9	1.5	3	5	0.75	1420
HSLHD-3-72	3	16/72	26	2.63	9	1.5	3	5	0.75	1460
HSLHD-5-48	5	16/48	26	2.63	9	2	4	6	1	1670
HSLHD-5-60	5	16/60	26	2.63	9	2	4	6	1	1740
HSLHD-5-72	5	16/72	26	2.63	9	2	4	6	1	1820
HSLHD-5-84	5	16/84	26	2.63	9	2	4	6	1	1890
HSLHD-5-96	5	16/96	26	2.63	9	2	4	6	1	2300
HSLHD-10-48	10	16/48	27	3.5	11	2	4	7	1.5	2700
HSLHD-10-60	10	16/60	27	3.5	11	2	4	7	1.5	2800
HSLHD-10-72	10	16/72	27	3.5	11	2	4	7	1.5	2930
HSLHD-10-84	10	16/84	27	3.5	11	2	4	7	1.5	3030
HSLHD-10-96	10	16/96	27	3.5	11	2	4	7	1.5	3150
HSLHD-15-48	15	16/48	29	3.5	12	2.5	5	9	1.5	2890
HSLHD-15-60	15	16/60	29	3.5	12	2.5	5	9	1.5	3220
HSLHD-15-72	15	16/72	29	3.5	12	2.5	5	9	1.5	3340
HSLHD-15-84	15	38/84	29	3.5	12	2.5	5	9	1.5	3850
HSLHD-15-96	15	38/96	29	3.5	12	2.5	5	9	1.5	3980
HSLHD-20-48	20	16/48	37	5.25	15	2.5	5	9	1.5	3255
HSLHD-20-60	20	16/60	37	5.25	15	2.5	5	9	1.5	3560
HSLHD-20-72	20	16/72	37	5.25	15	2.5	5	9	1.5	3875
HSLHD-20-84	20	38/84	37	5.25	15	2.5	5	9	1.5	4550
HSLHD-20-96	20	38/96	37	5.25	15	2.5	5	9	1.5	4900

\*1 US Ton = 2,000 lbs.

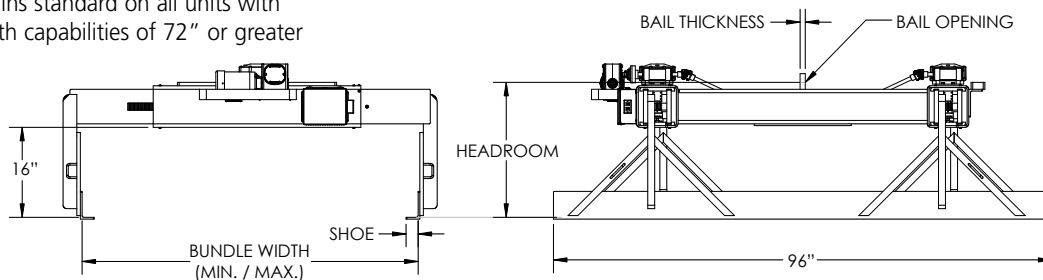
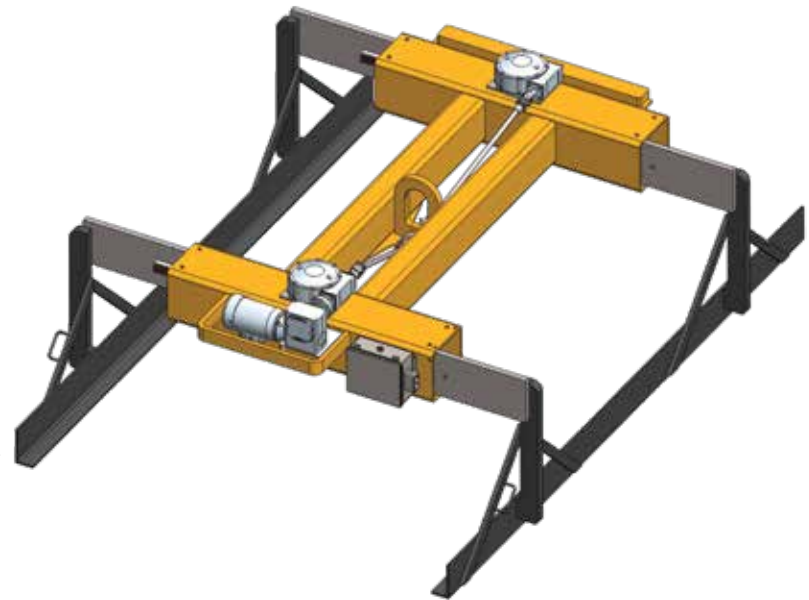
## HMSLHD MOTORIZED SHEET LIFTER HEAVY DUTY

### FEATURES

- This style of lifter is designed to lift and carry various sizes of bundles, sheets, and/or plates.
- Standard heavy duty direct drive, self-locking, machined rack and pinion leg adjustment.
- Standard heavy duty square tube H-Frame design.
- Standard heavy duty motor package with slip clutch to prevent damage to gearboxes from over adjustment.
- Easily maintained low headroom design.
- Engineered and manufactured to ASME B30.20 & BTH-1 Design Category B Service Class 2.
- 100% of ALL sheet lifters are Proof-Tested to 125% capacity and certificates supplied at No Additional Charge.
- Made in USA.

### OPTIONS

- Extended shoe lengths
- Extended leg heights
- Load chains with plate hooks
- Load chains standard on all units with load width capabilities of 72" or greater



Model #	Capacity (US Tons)*	Dimensions (Inches)								Weight (Lbs.)
		Bundle Width Min/Max	Headroom	Shoe Width	Min. Aisle	Bail Height	Bail Opening Width	Bail Opening Height	Bail Thickness	
HMSLHD-3-48	3	16/48	26	2.63	9	1.5	3	5	0.75	1770
HMSLHD-3-60	3	16/60	26	2.63	9	1.5	3	5	0.75	1820
HMSLHD-3-72	3	16/72	26	2.63	9	1.5	3	5	0.75	1860
HMSLHD-5-48	5	16/48	26	2.63	9	2	4	6	1	2070
HMSLHD-5-60	5	16/60	26	2.63	9	2	4	6	1	2140
HMSLHD-5-72	5	16/72	26	2.63	9	2	4	6	1	2220
HMSLHD-5-84	5	16/84	26	2.63	9	2	4	6	1	2290
HMSLHD-5-96	5	16/96	26	2.63	9	2	4	6	1	2700
HMSLHD-10-48	10	16/48	27	3.5	11	2	4	7	1.5	3100
HMSLHD-10-60	10	16/60	27	3.5	11	2	4	7	1.5	3200
HMSLHD-10-72	10	16/72	27	3.5	11	2	4	7	1.5	3330
HMSLHD-10-84	10	16/84	27	3.5	11	2	4	7	1.5	3430
HMSLHD-10-96	10	16/96	27	3.5	11	2	4	7	1.5	3450
HMSLHD-15-48	15	16/48	29	3.5	12	2.5	5	9	1.5	3290
HMSLHD-15-60	15	16/60	29	3.5	12	2.5	5	9	1.5	3620
HMSLHD-15-72	15	16/72	29	3.5	12	2.5	5	9	1.5	3740
HMSLHD-15-84	15	38/84	29	3.5	12	2.5	5	9	1.5	4250
HMSLHD-15-96	15	38/96	29	3.5	12	2.5	5	9	1.5	4380
HMSLHD-20-48	20	16/48	37	5.25	15	2.5	5	9	1.5	3655
HMSLHD-20-60	20	16/60	37	5.25	15	2.5	5	9	1.5	3960
HMSLHD-20-72	20	16/72	37	5.25	15	2.5	5	9	1.5	4275
HMSLHD-20-84	20	38/84	37	5.25	15	2.5	5	9	1.5	4900
HMSLHD-20-96	20	38/96	37	5.25	15	2.5	5	9	1.5	5200

\*1 US Ton = 2,000 lbs.



**DO NOT EXCEED CAPACITY!**  
See the SAFETY GUIDELINES section before using these products. Pages 92-94.

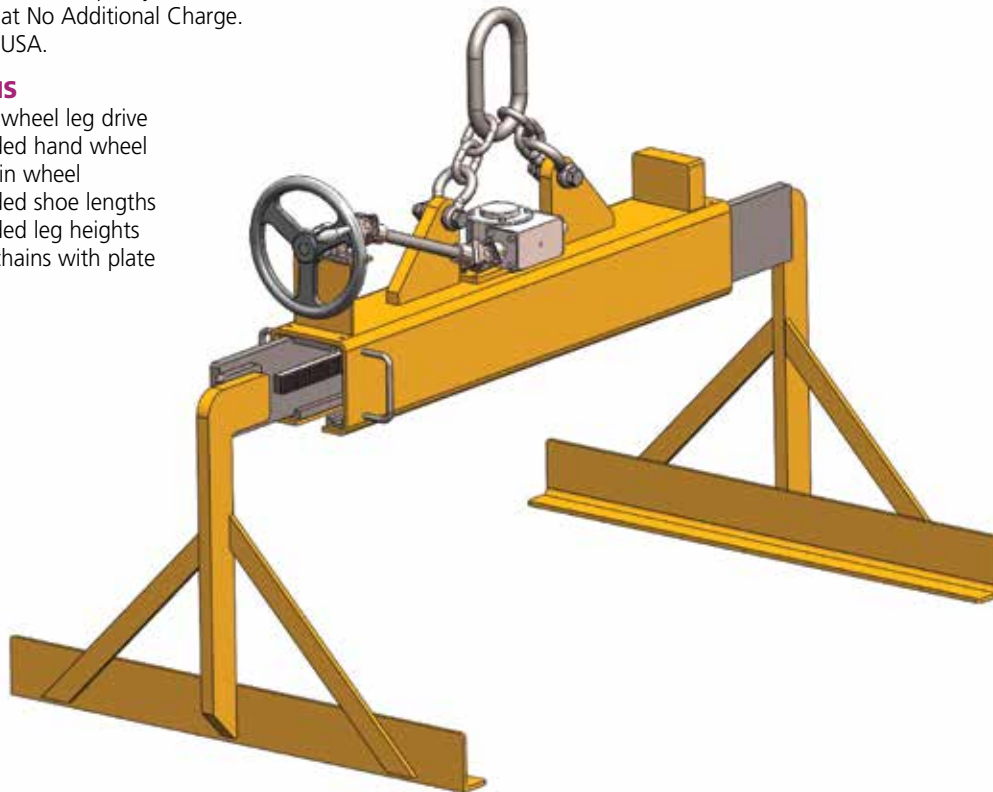
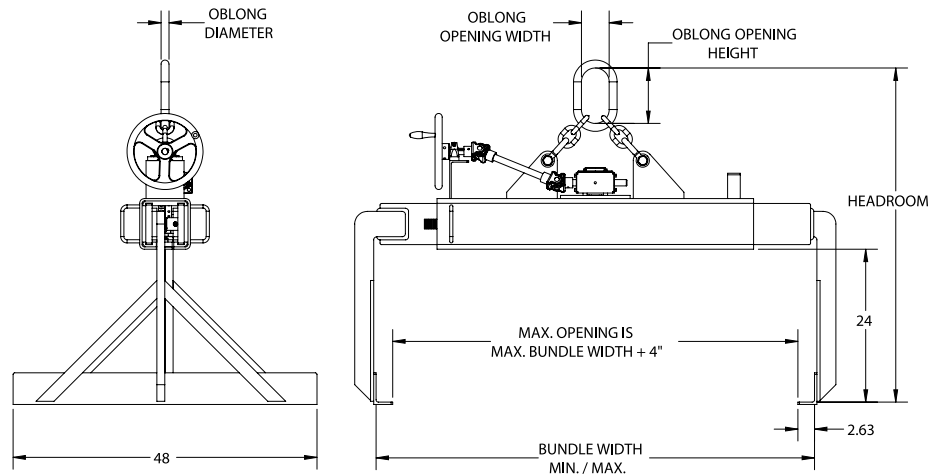
## HSLLD SHEET LIFTER LIGHT DUTY

### FEATURES

- This style of lifter is designed to lift and carry smaller sizes of bundles, sheets, and/or plates.
- Standard direct drive, self-locking, rack and pinion leg adjustment.
- Standard hand-wheel with slip clutch to prevent damage to gearboxes from over adjustment.
- Utilizes a sling style bail that adds stability and provides ease of maintenance on the gearbox and pinion gear assembly.
- Easily maintained low headroom design.
- Engineered and manufactured to ASME B30.20 & BTH-1 Design Category B Service Class 2.
- 100% of ALL sheet lifters are Proof-Tested to 125% capacity and certificates supplied at No Additional Charge.
- Made in USA.

### OPTIONS

- Chain wheel leg drive
- Extended hand wheel or chain wheel
- Extended shoe lengths
- Extended leg heights
- Load chains with plate hooks



Model #	Capacity (US Tons)*	Dimensions (Inches)							Weight (Lbs.)
		Bundle Width Min/Max	Headroom	Shoe Width	Min. Aisle	Oblong ML Diameter	Oblong ML Opening Width	Oblong ML Opening Height	
HSLLD-1.5-36	1.5	12/36	44	2.63	8	0.63	3	6	507
HSLLD-1.5-48	1.5	16/48	44	2.63	8	0.63	3	6	520
HSLLD-3-48	3	16/48	46	2.63	8	1	3.5	7	660
HSLLD-3-60	3	20/60	46	2.63	8	1	3.5	7	730
HSLLD-5-48	5	16/48	54	2.63	8	1	4.38	8.75	745
HSLLD-5-60	5	20/60	54	2.63	8	1	4.38	8.75	755

\*1 US Ton = 2,000 lbs.

# SHEET LIFTER

Custom Application Form



For pricing information: Fax completed form & contact info to 717-665-2861  
or email Customer Service at customerservice@harringtonhoists.com

## LOAD INFORMATION:

Describe the material you are planning to lift: \_\_\_\_\_

Material Conditions: ☐ Banded ☐ Loose ☐ Dry ☐ Oily

Manual (adjustment): ☐ Yes ☐ No

If Yes: Max Temp \_\_\_\_ Req Contact Time \_\_\_\_ Min Time Between Lifts \_\_\_\_

Will Individual Sheets Be Handled? ☐ Yes ☐ No

If Yes: Individual Sheet Plate Thickness (inches) Max \_\_\_\_ Min \_\_\_\_

Bundled Load Dimensions:

	Min (in)	Max (in)
Height	_____	_____
Width	_____	_____
Length	_____	_____
Weight	_____	_____

Is The Load Palletized? ☐ Yes ☐ No

If Yes: Pallet Dimensions (inches) Height \_\_\_\_ Width \_\_\_\_ Length \_\_\_\_ Weight \_\_\_\_

## SHEET LIFTER SPECIFICATIONS:

Operation: ☐ Manual ☐ Motorized ☐ Hydraulic

If Manual (adjustment): ☐ Hand Wheel ☐ Chain Wheel ☐ Extended Reach

If Motorized: ☐ AC ☐ DC Voltage \_\_\_\_ Phase \_\_\_\_ Cycle \_\_\_\_

If Yes Specify Type \_\_\_\_ ☐ Furnish Loose ☐ Mounted On Lifter

Controls Required: ☐ Yes ☐ No

Load Chains With Plate Hooks: ☐ Yes ☐ No

Distance Between Top Of The Load To The Crane Hook High Position(s): \_\_\_\_\_

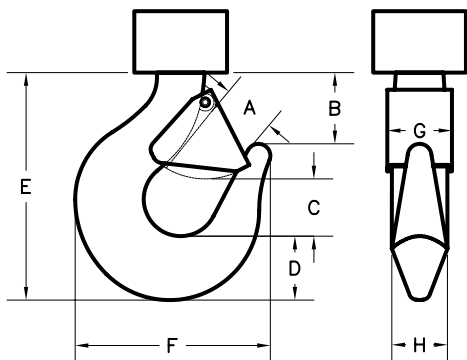
Capacity Of The Crane(s): \_\_\_\_\_

Required Duty Cycle Of The Sheet Lifter: Lifts Per Hour \_\_\_\_ Lifts Per Day \_\_\_\_

Crane Classification(s): ☐ A ☐ B ☐ C ☐ D ☐ E ☐ F

## CRANE HOOK SPECIFICATIONS (Inches):

A: \_\_\_\_ B: \_\_\_\_ C: \_\_\_\_ D: \_\_\_\_ E: \_\_\_\_ F: \_\_\_\_ G: \_\_\_\_ H: \_\_\_\_



Please provide pertinent application information not supplied above (extreme product or operating temperature, extreme environmental conditions such as temperature or moisture, space or headroom restrictions, additional specifications):

\_\_\_\_\_  
\_\_\_\_\_  
\_\_\_\_\_  
\_\_\_\_\_  
\_\_\_\_\_

Application forms available online at [www.harringtonhoists.com](http://www.harringtonhoists.com)