

Lift, Transport and Pour Drums with Your Forklift

- Add drum handling to your fork truck to raise and control pouring
- Attach to forklift quickly with no tools or truck modification
- No electric or hydraulic connections
- Eliminate backbreaking labor and dangerous, makeshift methods
- Fully invert a drum in less than 15 seconds
- Capacity: 1500 Lb. (680 kg) full drum, 800 Lb. (363 kg) Half-full drum. Half full rating is an indication of capacity for tilting an unbalanced, bottom-heavy drum. A partially full drum with unbalanced and shifting load is harder to tilt than a full drum.

MORCINCH™ Drum Handling System

Automatically adjusts for 22" to 23.5" (56 to 59.7 cm) diameter drum. Includes a flexible cinch chain cover to help protect drum sidewall. Incorporates alloy cinch chain and durable stress relief weld joints.

Standard Drum Holder



Standard Drum Holder with Cinch Chain and Ratchet

Option # 5115i-P



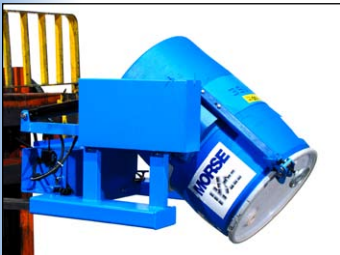
Factory Installed Web Strap and Ratchet Option

Model 285A-BP



Also see model 285XBP on page 2

Options to Handle Almost Any Drum



Top Rim Clamp

The **Top Rim Clamp** grips the upper rim of your drum to prevent it from slipping through the drum holder. Use to handle a RIMMED 55-gallon (210 liter) plastic or fiber drum.

Kit # 4560-P - Top Rim Clamp Assembly

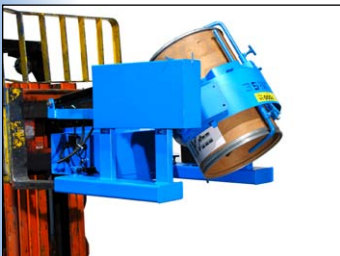
To handle a 55-gallon (210 liter) plastic drum with top rim, you must install either the Bracket Assembly or Top Rim Clamp.



Bracket Assembly

The **Bracket Assembly** provides a brace at top and bottom of your drum to prevent it from slipping length-ways in the drum holder. It adjusts for 31" to 39" (79 to 99 cm) tall drum. The Bracket Assembly is required to handle a RIMLESS plastic drum. It is also recommended to more securely handle a fiber drum.

Kit # 4556-P - Bracket Assembly



Diameter Adapters

For a smaller diameter drum, Diameter Adapters install easily without tools and are quickly removed. Quickly insert the correct size Diameter Adapter into the drum holder. Simply remove it to return to handling a 55-gallon (210 liter) drum.

Diameter Adapters for 17.5" (44.5 cm) diameter or smaller have brackets at top and bottom of the drum. They adjust for a drum up to 38" (95.5 cm) tall.

Standard Wired Pendant Drum Tilt Control

Model 285A-BP provides 12V battery-powered drum tilt with 2-button control pendant on a 10 foot (305 cm) cord. You control drum pouring with pushbutton ease while in your truck. Fully invert drum to completely empty the contents. Drum tilt may be started, stopped or reversed at any point in the 180° range.

Model 285A-BP Forklift-Karrier has its own battery. No power connection or truck modification is required. Separate charger is included.



Option 4804i-P Factory Installed Wireless Drum Tilt Control

Safe, simple and reliable wireless machine control. Approximately 300 foot (91 m) operating range featuring 900MHz frequency hopping technology for eliminating interference from other RF sources. Easily switch between direct wire pendant control and wireless remote control. Quick DC power disconnect for locking out the equipment.

Option # 4804i-P - Factory installed Wireless Control on model 285A-BP

Kit # 4804-P - Kit for customer to install Wireless Control on model 285A-BP



Lift and Dispense a Drum with Your Forklift

Forklift-Karriers - 800 Lb. (363 kg) Capacity

- Quickly mount on your forklift
 - No tools or truck modifications
 - No electric or hydraulic connections
- Provides controlled drum pouring
- Allows 360° drum tilt control in both directions
- Eliminates backbreaking labor and dangerous, makeshift methods
- Model 285AM has spark resistant parts

Morse Forklift-Karriers have a 20' (6 m) long pull chain loop with 10' (3 m) drop so you control drum tilting, 360° in either direction. Dispense a drum right from your forklift. Can also be ordered with Hand Crank or Hand Wheel option for use only within reach.

We recommend the MORStop Tilt-Brake option to automatically hold the drum tilt angle until you move it. This prevents a partially full, unbalanced drum from turning out of control, even when the contents shift from one end to the other.



>> Click to Watch Video <<

MORCINCH™ Drum Handling System

• Automatically adjusts for 22" to 23.5" (56 to 59.7 cm) diameter drum

• Accepts Diameter Adaptors for your smaller drum

• Bolt-on Top Rim Clamp or Bracket Assembly to

handle a plastic or fiber drum

• Includes a flexible cinch chain cover to help protect the sidewall of your drum

• Incorporates alloy cinch chain and durable stress relief weld joints



Models 285A & 285AM

• Chain wheel controlled tilt with 30:1 gear ratio and safety cover

• Handle drum with drum faucet in place

• Capacity: 800 Lb. (363 kg) full-drum
500 Lb. (227 kg) half-full drum

Half-full rating is an indication of capacity for tilting an unbalanced, bottom-heavy drum. A partially full drum with unbalanced and shifting load is harder to tilt than a full drum.

Model	Description	MORStop Tilt-Brake Option	Hand Crank Option	Hand Wheel Option	Adaptors for Smaller Drum
285A	Forklift-Karrier	3900i-P	X02-285	X03-285	55/30 Series
285AM	Forklift-Karrier with Spark Resistant Parts	3900i-P	X02-285M	X03-285M	55/30M Series

MORCINCH™ Drum Handling System

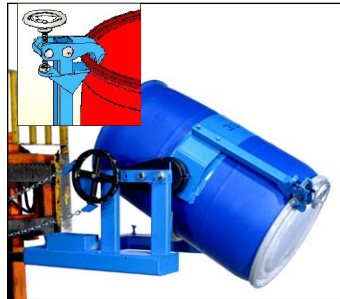
Rimless Plastic Drum Bracket Assembly
Handle rimless poly drum or more securely handle a fiber drum



The **Bracket Assembly** provides a brace at top and bottom of your drum to prevent it from slipping lengthways through the drum holder. The Bracket Assembly is required to handle a rimless plastic drum, and recommended to more securely handle a fiber drum. It adjusts for 31" to 39" (79 to 99 cm) tall drum.

Kit # 4556-P Bracket Assembly.
Kit # 4556M-P Spark Resistant

Rimmed Plastic Drum Top Rim Clamp
for 55-gallon (210 liter) rimmed plastic or fiber drum



The **Top Rim Clamp** grips the upper rim of your drum to prevent it from slipping through the drum holder. Use to handle a 55-gallon (210 liter) rimmed plastic or fiber drum. To handle a 55-gallon plastic drum with top rim, you must install either the Bracket Assembly or the Top Rim Clamp.

Kit # 4560-P Rim Clamp Assembly.
Kit # 4560M-P Spark Resistant Rim Clamp Assembly.

Smaller Drum Diameter Adaptors
for Smaller Diameter Drum



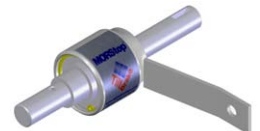
Diameter Adaptors insert into the drum holder to handle a smaller drum. Select the correct size Diameter Adaptor for each drum. Spark resistant and stainless steel Diameter Adaptors also available.

Web Strap with Ratchet



Option # 5115i-P Web Strap and Ratchet installed (not for spark resistant models)

Installed Options



We recommend **Option # 3900i-P MORStop Tilt-Brake** factory installed on your Forklift-Karrier is recommended to automatically hold the drum tilt angle.

Kit # 3900-P MORStop Tilt-Brake Kit for field installation.



Option X02-285 or X02-285M
9" (22.9 cm) Hand Crank

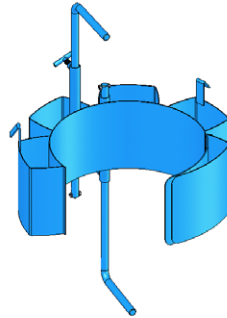
Option X03-285 or X03-285M
16" (40.6 cm) Hand Wheel

Diameter Adaptors

Diameter Adaptors allow your Forklift-Karrier to handle a smaller drum. Simply place the correct size Diameter Adaptor into the drum holder. When you complete dispensing from your smaller drum, simply lift the Diameter Adaptor out of the drum holder to return to handling a 55-gallon (210 liter) drum.



Model 55/30-19



Model 55/30-17.5

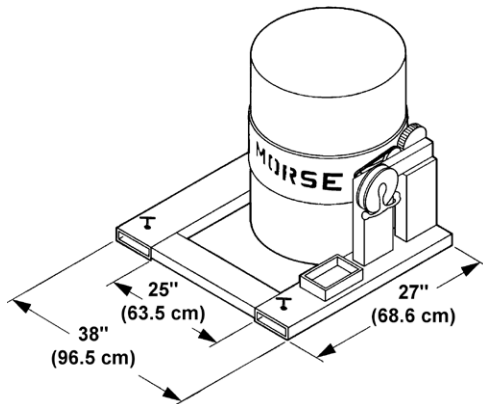
Diameter Adaptors for 17.5" (44.5 cm) diameter and smaller drums have brackets at top and bottom of the drum. They adjust to securely hold a drum up to 38" (96.5 cm) tall.

Spark resistant and stainless steel Diameter Adaptors are available for the same diameter ranges.

DIAMETER ADAPTORS			
DIAMETER ADAPTORS	SPARK RESISTANT DIAMETER ADAPTORS	STAINLESS STEEL DIAMETER ADAPTORS	FITS DIAMETER
55/30-20.5	55/30M-20.5	55/30SS-20.5	20" to 20.5" (50.8 to 52.1 cm)
55/30-19	55/30M-19	55/30SS-19	18.5" to 19" (47 to 48.3 cm)
55/30-17.5	55/30M-17.5	55/30SS-17.5	17" to 17.5" (43.2 to 44.5 cm)
55/30-16	55/30M-16	55/30SS-16	15.5" to 16" 39.4 to 40.6 cm)
55/30-14.5	55/30M-14.5	55/30SS-14.5	14" to 14.5" (35.6 to 36.8 cm)

285 Series Dimensions

IMPORTANT: Requires 25" Between Forks



Fork pocket openings are 6.5" wide x 2.5" high (16.5 x 6.35 cm).

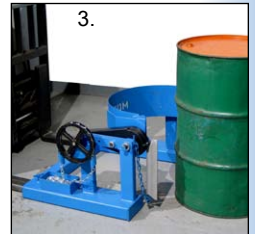
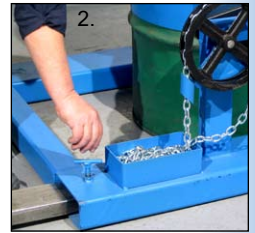
Fork pockets are 26.5" deep (67.3 cm).

Inside width between forks **MUST** be at least 25" (63.5 cm).

NOTE: Standard loop of pull chain extends approximately 10' (3 m) beyond the chain wheel. Custom lengths are available.

Steps For Use of Forklift-Karriers

1. Drive your truck forks into the Forklift-Karrier's fork pockets.
2. Dismount and screw down the safety locks to grip the forks.
3. Drive to a drum at ground level, so that the drum holder meets the center of your drum.
4. Secure your drum in the drum holder between drum ribs... no tools are needed. To secure drum, drape the cinch chain with flexible chain cover across the front of the drum, insert one link into the slot on the ratchet handle, and turn the ratchet handle clockwise to tighten the cinch chain around the drum.
5. If your Forklift-Karrier is so equipped, tighten the Top Rim Clamp or adjust the Bracket Assembly height.
6. Raise your forklift carriage and the secured drum, then travel to the dumping location.
7. To control turning of the drum without leaving your seat, pull the chain loop for complete control of drum tilting.
8. To remove drum from your Forklift-Karrier, turn the ratchet handle clockwise to relieve pressure on the ratchet teeth, lift pawl handle to release teeth engagement, then rotate the ratchet handle counter clockwise to loosen the chain and allow its removal from the slot on the ratchet handle.



MADE IN USA

Custom Drum Handler



Custom model 185S-HD-FP handles drum completely below the forks. Requires 17.5" (44.5 cm) between forks. Or use below-hook with your crane.

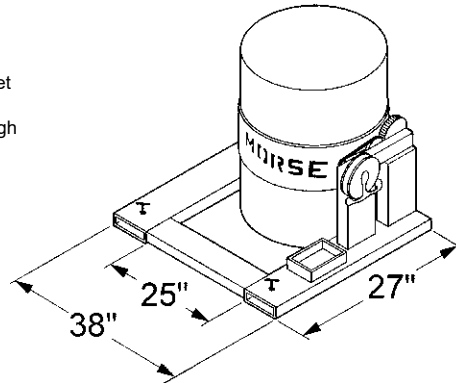
Use with:

- Walkie Stacker
- Forklift
- Crane or Hoist below-hook

Forklift-Karrier Dimensions

Requires 25" between your forks, as fork pocket openings are 25" (63.5 cm) apart.
Each fork pocket opening is 6.5" wide x 2.5" high (16.5 x 6.4 cm)
Fork pockets are 26.5" (67.3 cm) deep

Ships fully assembled.
Domestic ship dimensions:
L42" W40" H 27" (107 x 102 x 69 cm)
Domestic ship weight: 355 Lb. (161 kg)



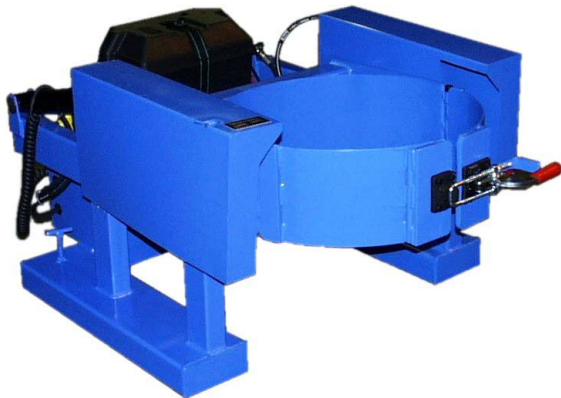
Model 285A-BP

Model #	Description	Capacity	Drum Diameter
285A-BP	Fortklift-Karrier with battery power tilt control	1500 Lb. (680 kg)	22" to 23.5" (56 to 59.7 cm)

NOTE: 12V Deep Cycle Lead Acid Battery is designed for domestic shipment only. For export shipment, choose the following battery option:

- Option "NB" No Battery. Customer must obtain battery before use... Exide # 27MDP 12V Deep Cycle Battery or equivalent.

Option #	Description	Capacity	Drum Diameter
4804i-P	Factory Installed Wireless Remote Tilt Control	-	-
5115i-P	Factory Installed Web Strap and Ratchet	1500 Lb. (680 kg)	-
4560-P	Top Rim Clamp for RIMMED 55-gallon plastic drum	-	22" to 23.5" (56 to 59.7 cm)
4556-P	Bracket Assembly for RIMLESS 55-gallon plastic drum	-	19" to 23.5" (48.3 to 59.7 cm)
55/30 Series	Diameter Adapters (choose correct size for each drum)	-	See Diameter Adapter spec sheet



Super-Duty Model 285XBP

Forklift-Karrier with 2500 Lb. (1134 kg) Capacity and Battery Power Tilt

Model 285XBP to lift and pour a drum weighing up to 2500 Lb. (1134 kg) with the convenience of battery powered tilt control.

Extra heavy-duty 3-piece drum holder with toggle clamp closure to secure drum.

It can also be ordered with the wireless tilt control factory installed Option # 48048i-P

Domestic ship dimensions: L42" W40" H 27" (107 x 102 x 69 cm)
Domestic ship weight: 500 Lb. (227 kg)

Model 285XBP

Model #	Description	Capacity	Drum Diameter
285XBP	Fortklift-Karrier with battery power tilt control	2500 Lb. (1134 kg)	22.5" (57 cm)

Option #	Description	Capacity	Drum Diameter
4804i-P	Factory Installed Wireless Remote Tilt Control	-	-

Accessory	Description	Capacity	Drum Diameter
55/30-19GR	Diameter Adapter for 30-gallon (114 liter) drum	-	18.5" to 19" 47 to 48.3 cm)