

# MODEL CMJ

## Wall Bracket Cantilever Style Jib Crane

For use in bays, along walls, in work cells, or as a supplement to overhead cranes or gantry systems. Similar to the tie rod style crane, but allowing maximum hoist lift.

**CAPACITIES & SPANS** - Rated loads from 1/8 to 12 ton with span lengths up to 30 feet.

**ROTATION** - 180+ degree rotation is standard

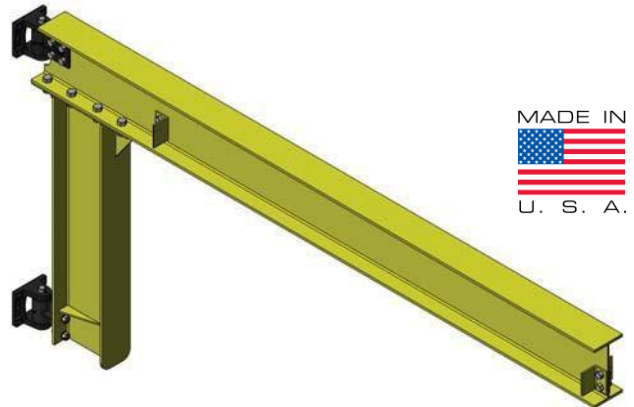
**FITTINGS** - Heavy duty with effortless rotation, cast iron fittings with roller bearings and zerk fittings for easy field lubrication.

### BENEFITS vs. TIE ROD STYLE JIB CRANE

- Less Headroom for needed for Mounting

### OPTIONS & ACCESSORIES

- Tight Wire Kit (Festooning/"Tagline")
- Rotation Stops
- Outdoor Application
- **Motorized Rotation**
- Hoist & Trolley Packages



MADE IN  
  
U. S. A.

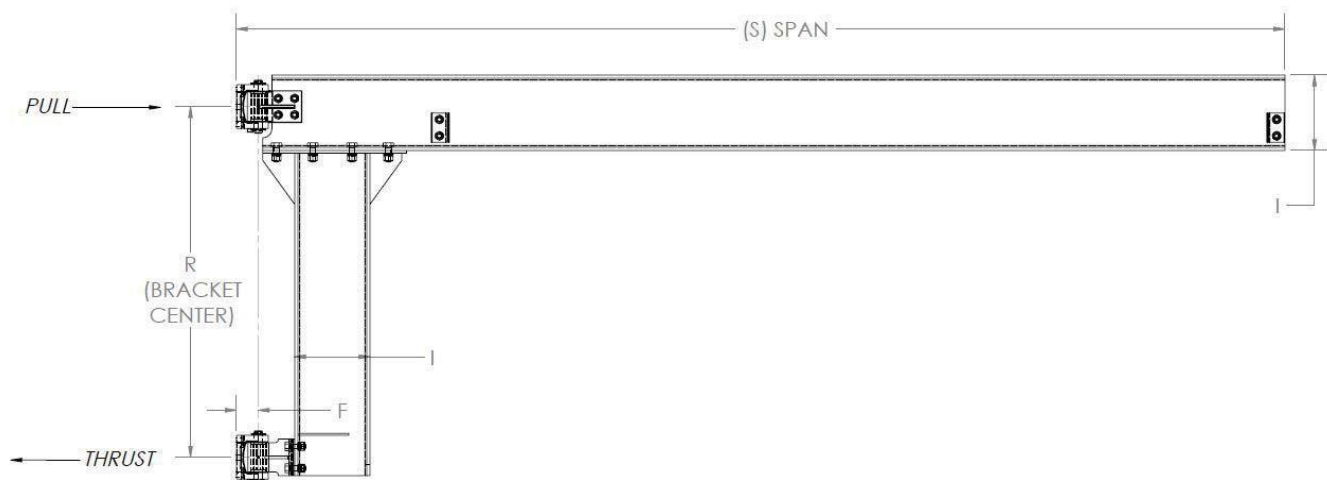
Fitting kits available for "Do-It-Yourself" crane fabrication.



Top Fitting



Bottom Fitting



# RAZE

## Wall Bracket Cantilever Style Jlb Crane

| Capacity | Span (S) | Model Number | R     | F      | I   | Thrust & Pull |
|----------|----------|--------------|-------|--------|-----|---------------|
| 1/4 TON  | 8'       | CMJ-500-8    | 4'-0  | 3"     | 8"  | 1300#         |
|          | 10'      | CMJ-500-10   | 4'-0  | 3"     | 8"  | 1575#         |
|          | 12'      | CMJ-500-12   | 4'-0  | 3"     | 8"  | 1900#         |
|          | 14'      | CMJ-500-14   | 4'-0  | 3"     | 8"  | 2225#         |
|          | 16'      | CMJ-500-16   | 4'-0  | 3"     | 10" | 2600#         |
|          | 18'      | CMJ-500-18   | 4'-0  | 3"     | 10" | 2900#         |
|          | 20'      | CMJ-500-20   | 4'-0  | 3"     | 10" | 3300#         |
| 1/2 TON  | 8'       | CMJ-1000-8   | 4'-0" | 3"     | 8"  | 2600#         |
|          | 10'      | CMJ-1000-10  | 4'-0" | 3"     | 8"  | 3150#         |
|          | 12'      | CMJ-1000-12  | 4'-0" | 3"     | 8"  | 3850#         |
|          | 14'      | CMJ-1000-14  | 4'-0" | 3"     | 10" | 4500#         |
|          | 16'      | CMJ-1000-16  | 4'-0" | 3"     | 10" | 5150#         |
|          | 18'      | CMJ-1000-18  | 5'-0" | 4"     | 12" | 4700#         |
|          | 20'      | CMJ-1000-20  | 5'-0" | 4"     | 12" | 5200#         |
| 1 TON    | 8'       | CMJ-2000-8   | 4'-0" | 3"     | 8"  | 5000#         |
|          | 10'      | CMJ-2000-10  | 4'-0" | 3"     | 10" | 6250#         |
|          | 12'      | CMJ-2000-12  | 4'-0" | 3"     | 10" | 7600#         |
|          | 14'      | CMJ-2000-14  | 5'-0" | 4"     | 12" | 7300#         |
|          | 16'      | CMJ-2000-16  | 5'-0" | 4"     | 12" | 8200#         |
|          | 18'      | CMJ-2000-18  | 6'-0" | 4-1/2" | 16" | 7750#         |
|          | 20'      | CMJ-2000-20  | 6'-0" | 4-1/2" | 16" | 8600#         |
| 2 TON    | 8'       | CMJ-4000-8   | 5'-0" | 4"     | 12" | 8000#         |
|          | 10'      | CMJ-4000-10  | 5'-0" | 4"     | 12" | 10500#        |
|          | 12'      | CMJ-4000-12  | 5'-0" | 4"     | 12" | 12500#        |
|          | 14'      | CMJ-4000-14  | 6'-0" | 4-1/2" | 16" | 13000#        |
|          | 16'      | CMJ-4000-16  | 6'-0" | 4-1/2" | 18" | 14500#        |
|          | 18'      | CMJ-4000-18  | 6'-0" | 4-1/2" | 18" | 16000#        |
|          | 20'      | CMJ-4000-20  | 6'-0" | 4-1/2" | 18" | 17500#        |
| 3 TON    | 8'       | CMJ-6000-8   | 6'-0" | 4-1/2" | 15" | 9900#         |
|          | 10'      | CMJ-6000-10  | 6'-0" | 4-1/2" | 15" | 13000#        |
|          | 12'      | CMJ-6000-12  | 6'-0" | 4-1/2" | 15" | 14500#        |
|          | 14'      | CMJ-6000-14  | 6'-0" | 4-1/2" | 18" | 18000#        |
|          | 16'      | CMJ-6000-16  | 6'-0" | 4-1/2" | 18" | 21000#        |
|          | 18'      | CMJ-6000-18  | 6'-0" | 4-1/2" | 21" | 23000#        |
|          | 20'      | CMJ-6000-20  | 6'-0" | 4-1/2" | 21" | 25500#        |

### Model Number Explanation

Model Number - Capacity - Span.

Example: 2 ton cantilever jib with a 12 foot span: CMJ = Wall bracket cantilever style jib, 4000 = 2 Ton, 12 = Span (CMJ-4000-12).

### Capacities and Spans

Larger capacities and spans available upon request

Hand geared & motorized units available

# RAZE