

MODEL 314

Mast Type Jib Crane

Designed to be floor mounted, with upper support from building truss or bracket. The model 314 provides an economical solution for 360° of rotation with no special foundation requirement thus reducing the cost of installation. Designed for low headroom applications and also available with a drop boom.

CAPACITIES & SPANS - Rated loads from 1/8 to 10 ton with span lengths up to 30 feet.

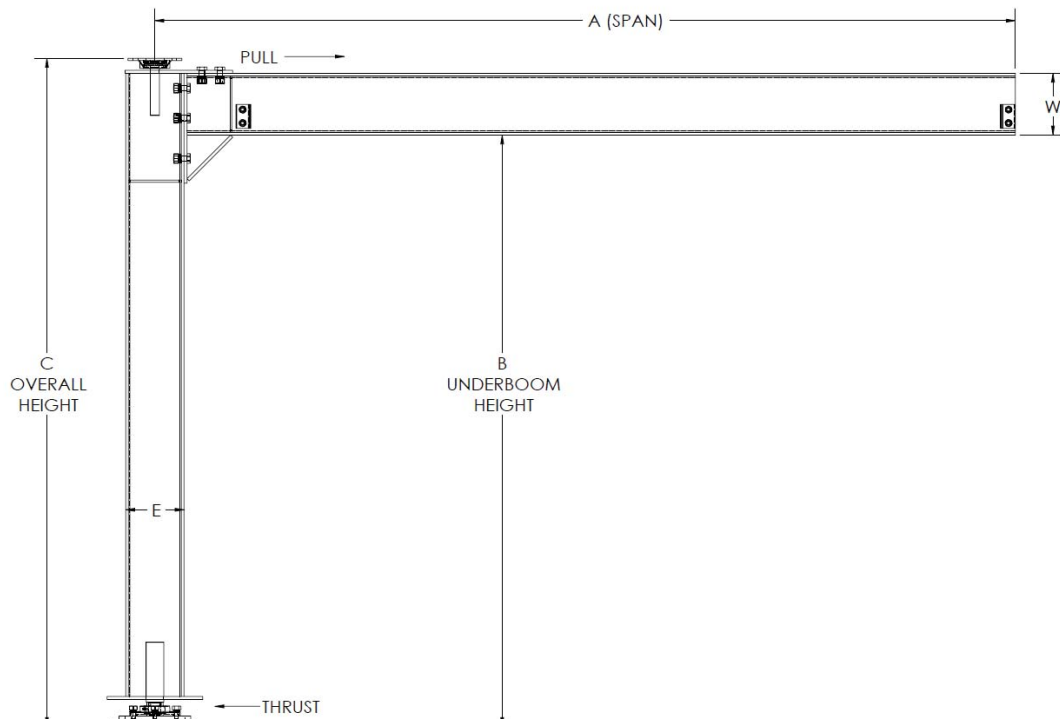
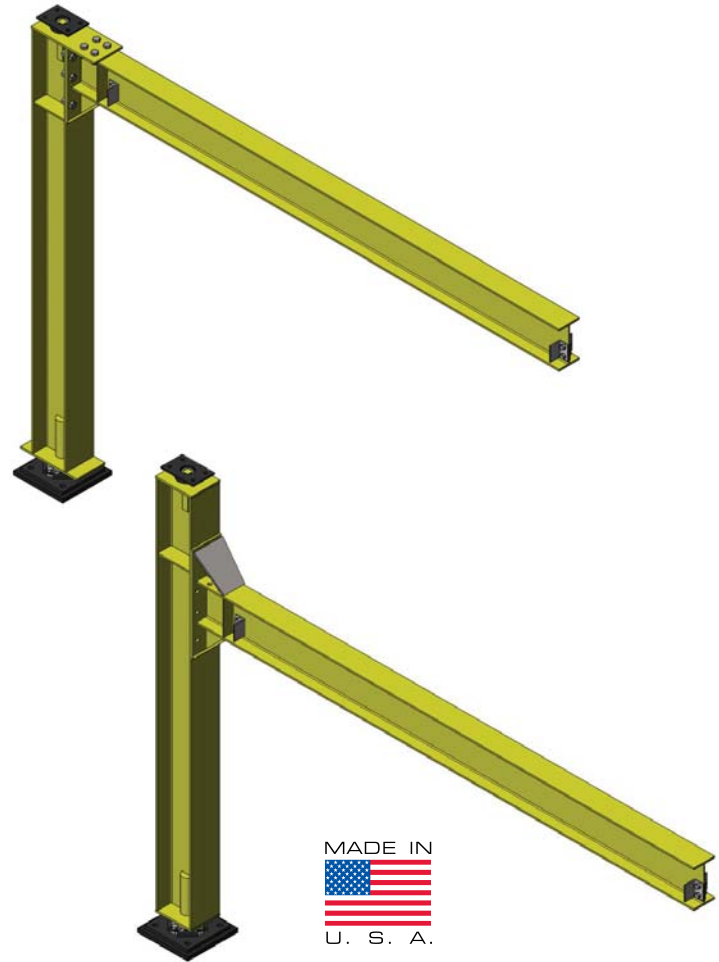
ROTATION - 360 degree rotation is standard

FEATURES & BENEFITS

- **Most economical 360 degree rotation jib crane**
- **No Foundation Requirement**
- **Perfect solution for overhead crane work cell handling**
- Easy rotation even on heavy loads
- Low force exertion on supporting structure
- Maximizes trolley travel
- Full & Drop cantilever available
- **Motorized rotation available**

OPTIONS & ACCESSORIES

- Tight Wire Kit (Festooning/"Tagline")
- Rotation Stops
- Outdoor Application
- **Motorized Rotation**
- **Hand Geared Rotation**
- Hoist & Trolley Packages



RAZE™

Mast Type Jib Crane

		SPAN (S)/Model Number*						
CAP	HUB	8'	10'	12'	14'	16'	18'	20'
1/4 TON	10'	314-500-8-10	314-500-10-10	314-500-12-10	314-500-14-10	314-500-16-10	314-500-18-10	314-500-20-10
	12'	314-500-8-12	314-500-10-12	314-500-12-12	314-500-14-12	314-500-16-12	314-500-18-12	314-500-20-12
	14'	314-500-8-14	314-500-10-14	314-500-12-14	314-500-14-14	314-500-16-14	314-500-18-14	314-500-20-14
	16'	314-500-8-16	314-500-10-16	314-500-12-16	314-500-14-16	314-500-16-16	314-500-18-16	314-500-20-16
	18'	314-500-8-18	314-500-10-18	314-500-12-18	314-500-14-18	314-500-16-18	314-500-18-18	314-500-20-18
	20'	314-500-8-20	314-500-10-20	314-500-12-20	314-500-14-20	314-500-16-20	314-500-18-20	314-500-20-20
1/2 TON	10'	314-1000-8-10	314-1000-10-10	314-1000-12-10	314-1000-14-10	314-1000-16-10	314-1000-18-10	314-1000-20-10
	12'	314-1000-8-12	314-1000-10-12	314-1000-12-12	314-1000-14-12	314-1000-16-12	314-1000-18-12	314-1000-20-12
	14'	314-1000-8-14	314-1000-10-14	314-1000-12-14	314-1000-14-14	314-1000-16-14	314-1000-18-14	314-1000-20-14
	16'	314-1000-8-16	314-1000-10-16	314-1000-12-16	314-1000-14-16	314-1000-16-16	314-1000-18-16	314-1000-20-16
	18'	314-1000-8-18	314-1000-10-18	314-1000-12-18	314-1000-14-18	314-1000-16-18	314-1000-18-18	314-1000-20-18
	20'	314-1000-8-20	314-1000-10-20	314-1000-12-20	314-1000-14-20	314-1000-16-20	314-1000-18-20	314-1000-20-20
1 TON	10'	314-2000-8-10	314-2000-10-10	314-2000-12-10	314-2000-14-10	314-2000-16-10	314-2000-18-10	314-2000-20-10
	12'	314-2000-8-12	314-2000-10-12	314-2000-12-12	314-2000-14-12	314-2000-16-12	314-2000-18-12	314-2000-20-12
	14'	314-2000-8-14	314-2000-10-14	314-2000-12-14	314-2000-14-14	314-2000-16-14	314-2000-18-14	314-2000-20-14
	16'	314-2000-8-16	314-2000-10-16	314-2000-12-16	314-2000-14-16	314-2000-16-16	314-2000-18-16	314-2000-20-16
	18'	314-2000-8-18	314-2000-10-18	314-2000-12-18	314-2000-14-18	314-2000-16-18	314-2000-18-18	314-2000-20-18
	20'	314-2000-8-20	314-2000-10-20	314-2000-12-20	314-2000-14-20	314-2000-16-20	314-2000-18-20	314-2000-20-20
2 TON	10'	314-4000-8-10	314-4000-10-10	314-4000-12-10	314-4000-14-10	314-4000-16-10	314-4000-18-10	314-4000-20-10
	12'	314-4000-8-12	314-4000-10-12	314-4000-12-12	314-4000-14-12	314-4000-16-12	314-4000-18-12	314-4000-20-12
	14'	314-4000-8-14	314-4000-10-14	314-4000-12-14	314-4000-14-14	314-4000-16-14	314-4000-18-14	314-4000-20-14
	16'	314-4000-8-16	314-4000-10-16	314-4000-12-16	314-4000-14-16	314-4000-16-16	314-4000-18-16	314-4000-20-16
	18'	314-4000-8-18	314-4000-10-18	314-4000-12-18	314-4000-14-18	314-4000-16-18	314-4000-18-18	314-4000-20-18
	20'	314-4000-8-20	314-4000-10-20	314-4000-12-20	314-4000-14-20	314-4000-16-20	314-4000-18-20	314-4000-20-20
3 TON	10'	314-6000-8-10	314-6000-10-10	314-6000-12-10	314-6000-14-10	314-6000-16-10	314-6000-18-10	314-6000-20-10
	12'	314-6000-8-12	314-6000-10-12	314-6000-12-12	314-6000-14-12	314-6000-16-12	314-6000-18-12	314-6000-20-12
	14'	314-6000-8-14	314-6000-10-14	314-6000-12-14	314-6000-14-14	314-6000-16-14	314-6000-18-14	314-6000-20-14
	16'	314-6000-8-16	314-6000-10-16	314-6000-12-16	314-6000-14-16	314-6000-16-16	314-6000-18-16	314-6000-20-16
	18'	314-6000-8-18	314-6000-10-18	314-6000-12-18	314-6000-14-18	314-6000-16-18	314-6000-18-18	314-6000-20-18
	20'	314-6000-8-20	314-6000-10-20	314-6000-12-20	314-6000-14-20	314-6000-16-20	314-6000-18-20	314-6000-20-20
5 TON	10'	314-10000-8-10	314-10000-10-10	314-10000-12-10	314-10000-14-10	314-10000-16-10	314-10000-18-10	314-10000-20-10
	12'	314-10000-8-12	314-10000-10-12	314-10000-12-12	314-10000-14-12	314-10000-16-12	314-10000-18-12	314-10000-20-12
	14'	314-10000-8-14	314-10000-10-14	314-10000-12-14	314-10000-14-14	314-10000-16-14	314-10000-18-14	314-10000-20-14
	16'	314-10000-8-16	314-10000-10-16	314-10000-12-16	314-10000-14-16	314-10000-16-16	314-10000-18-16	314-10000-20-16
	18'	314-10000-8-18	314-10000-10-18	314-10000-12-18	314-10000-14-18	314-10000-16-18	314-10000-18-18	314-10000-20-18
	20'	314-10000-8-20	314-10000-10-20	314-10000-12-20	314-10000-14-20	314-10000-16-20	314-10000-18-20	314-10000-20-20

Model Number Explanation

Model Number - Capacity - Span - HUB.

Example: 1 ton mast type full cantilever jib with a 10 foot span and 12 height under boom: 314 = Mast type jib crane, 2000 = 1 Ton, 10 = Span, 12 = Height Under Boom (314-2000-10-12).

Capacities and Spans

Larger capacities and spans available upon request

Hand geared & motorized units available

