

# COLUMBIA

## WINCHES & HOISTS

Manufactured by Allied Power Products, Inc.

**PNEUMATIC WINCHES**  
**UP TO 10,000 LBS. CAPACITY**

**WG**  
**SERIES**



### STANDARD FEATURES

- Rated for winching
- Dependable vane motor
- Totally enclosed watertight components
- Automatic braking system
- Manual freespool
- Permanently lubed, 3-stage planetary geartrain
- Simple installation at any angle

Custom designs are available to meet your exact requirements for any lifting, pulling or positioning application with pneumatic, hydraulic, electric and self-contained power sources.

### OPTIONS

- Winch mounted manual control valves
- Remote valve with pneumatic pendant
- Lagged, grooved and divided drums
- Cable tensioners
- Strap drum conversions
- AutoAdvance Line Spoolers
- I-Beam trolleys, Hammerhead systems
- Quick-mount brackets
- Wire rope, sheaves, snatch blocks and other rigging

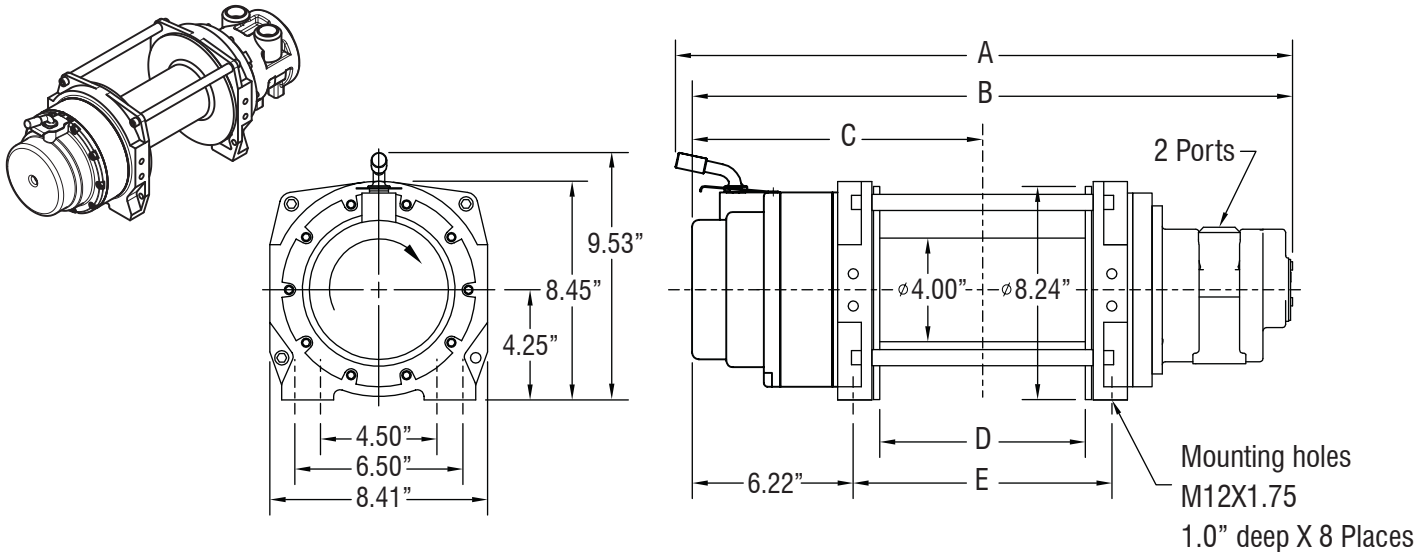
**CAUTION:** The final determination as to the suitability of this product for any purpose is solely that of the user. Columbia products are not to be used to lift people or to lift anything over people.

**alliedpower.com**  
D00106C

Distributed by:  
**ALLIED POWER PRODUCTS, INC.**  
**THE WINCH & HOIST SPECIALISTS**  
6590 SW FALLBROOK PLACE, BEAVERTON, OR 97008  
(503) 626-0654 FAX (503) 646-1996

## DIMENSIONAL DATA

All measurements are shown in inches.



| Drum Size | Dimensions (Inches) |         |        |        |         |        |       |      |      | Typical Weight |         |         | Wire Rope Capacity |      |      | Motor   | Port Size |
|-----------|---------------------|---------|--------|--------|---------|--------|-------|------|------|----------------|---------|---------|--------------------|------|------|---------|-----------|
|           | A                   |         |        | B      |         |        | C     | D    | E    |                |         |         |                    |      |      |         |           |
|           | 2.5 HP              | 4.25 HP | 6.5 HP | 2.5 HP | 4.25 HP | 6.5 HP |       |      |      |                |         |         |                    |      |      |         |           |
| -01       | 22.4                | 23.9    | 24.5   | 21.8   | 23.3    | 23.9   | 11.22 | 8.0  | 10.0 | 86 LBS         | 96 LBS  | 104 LBS | 326'               | 228' | 159' | 2.5 HP  | ½" NPT    |
| -02       | 24.4                | 25.9    | 26.5   | 25.3   | 25.3    | 25.9   | 12.22 | 10.0 | 12.0 | 89 LBS         | 99 LBS  | 107 LBS | 407'               | 285' | 198' | 4.25 HP | ¾" NPT    |
| -03       | 26.9                | 28.4    | 29.0   | 27.8   | 27.8    | 28.4   | 13.47 | 12.5 | 14.5 | 99 LBS         | 109 LBS | 117 LBS | 509'               | 356' | 248' | 6.5 HP  | 1" NPT    |

## PERFORMANCE

| Model     | Motor HP | Power Input |      | Gear Ratio | Line Pull • Line Speed (Calculated) |      |           |       |           |       |
|-----------|----------|-------------|------|------------|-------------------------------------|------|-----------|-------|-----------|-------|
|           |          | PSI         | SCFM |            | First Layer                         |      | Mean Drum |       | Full Drum |       |
|           |          |             |      |            | LBS                                 | FPM  | LBS       | FPM   | LBS       | FPM   |
| WG750-P   | 4.25     | 65          | 110  | 36:1       | 750                                 | 95.4 | 562       | 123.8 | 457       | 152.1 |
| WG1600-P  | 6.5      | 75          | 190  | 36:1       | 1600                                | 95.4 | 1206      | 123.8 | 981       | 152.1 |
| WG2750-P  | 2.5      | 70          | 75   | 261:1      | 2750                                | 17.6 | 2190      | 22.8  | 1782      | 28.0  |
| WG5000-P  | 4.25     | 65          | 110  | 261:1      | 5000                                | 13.2 | 3910      | 17.1  | 3182      | 21.0  |
| WG10000-P | 6.5      | 75          | 190  | 261:1      | 10000                               | 13.0 | 7170      | 17.0  | 6270      | 21.0  |

Performance based on intermittent duty cycles.

**CAUTION:** The final determination as to the suitability of this product for any purpose is solely that of the user. Columbia products are not to be used to lift people or to lift anything over people.