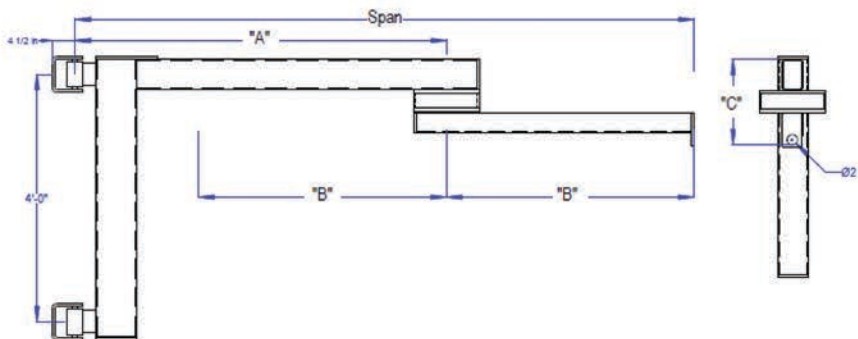


CW-FAR Series Cantilever Wall Mount Articulating Jib Crane 250, 500 & 1,000 lbs.

| Capacity (Pounds) | Model | Span (ft.) | Bracket Centers | "A" (ft.) | "B" (ft.) | "C" (in.) | Thrust & Pull (lbs.) | Unit Weight (lbs.) |
|-------------------|------------|------------|-----------------|-----------|-----------|-----------|----------------------|--------------------|
| 250 | CW2508-FAR | 8 | 4' 0" | 5 | 3 | 16-1/2 | 1,288 | 486 |
| 250 | CW2510-FAR | 10 | 4' 0" | 6 | 4 | 16-1/2 | 1,607 | 514 |
| 250 | CW2512-FAR | 12 | 4' 0" | 7 | 5 | 16-1/2 | 1,973 | 550 |
| 250 | CW2514-FAR | 14 | 4' 0" | 8 | 6 | 20-1/2 | 2,808 | 689 |
| 250 | CW2516-FAR | 16 | 4' 0" | 9 | 7 | 20-1/2 | 3,429 | 737 |
| 500 | CW508-FAR | 8 | 4' 0" | 5 | 3 | 19-1/2 | 2,353 | 527 |
| 500 | CW510-FAR | 10 | 4' 0" | 6 | 4 | 19-1/2 | 2,961 | 563 |
| 500 | CW512-FAR | 12 | 4' 0" | 7 | 5 | 19-1/2 | 3,588 | 607 |
| 500 | CW514-FAR | 14 | 4' 0" | 8 | 6 | 20-1/2 | 4,234 | 689 |
| 500 | CW516-FAR | 16 | 4' 0" | 9 | 7 | 20-1/2 | 4,899 | 737 |
| 1,000 | CW108-FAR | 8 | 4' 0" | 5 | 3 | 20-1/2 | 4,003 | 552 |
| 1,000 | CW110-FAR | 10 | 4' 0" | 6 | 4 | 20-1/2 | 5,024 | 593 |
| 1,000 | CW112-FAR | 12 | 4' 0" | 7 | 5 | 20-1/2 | 6,063 | 642 |
| 1,000 | CW114-FAR | 14 | 5' 0" | 8 | 6 | 20-1/2 | 7,232 | 956 |

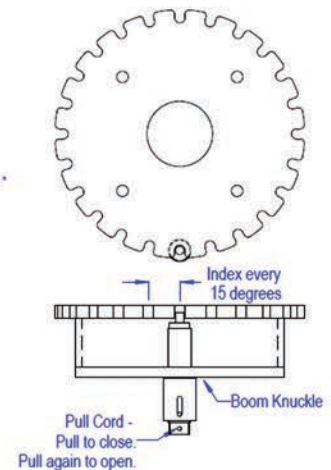
Contact sales for other capacities and spans.

FAR-RL Indexing Boom Lock



Accessories:

- FAR-TEC1 Single Top Entry Electrical Collector (includes 12/4 SO cord in auxiliary boom)
- FAR-TAS1 Single Air Swivel (includes 1/2 air hose in auxiliary boom)
- FAR-RL Indexing Rotation Lock for auxiliary boom



FAR-RL available as option on all articulating cranes. **MUST** be ordered with crane.