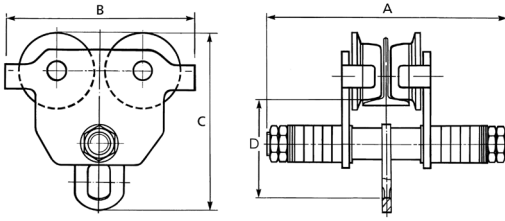
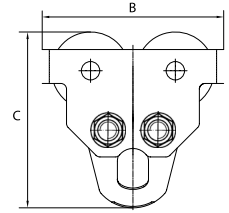


# SPECIFICATIONS:

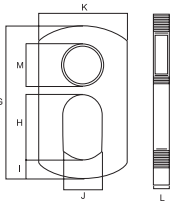
## PUSH BEAM TROLLEY 0.25 T, 0.5 T, 1 T, 2 T, 3 T, 5 T



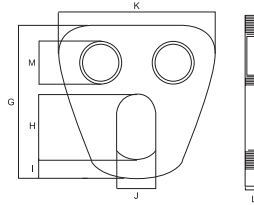
## PUSH BEAM TROLLEY 10 T



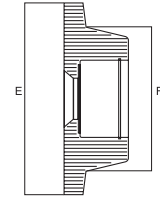
## PUSH BEAM TROLLEY 0.25 T, 0.5 T, 1 T, 2 T, 3 T, 5 T



## PUSH BEAM TROLLEY 10 T



## ALL MODELS



### PUSH BEAM TROLLEY SPECIFICATIONS

	OZ025PBT	OZ05PBT	OZ1PBT	OZ2PBT	OZ3PBT	OZ5PBT	OZ10PBT	
Safe working load - lb (kg)	500 (250)	1,000 (500)	2,000 (1,000)	4,000 (2,000)	6,000 (3,000)	10,000 (5,000)	20,000 (10,000)	
Adjustable flange width - in (mm)	2.00-6.00 (50-152)	2.52-8.00 (64-203)	2.52-8.00 (64-203)	3.46-12.00 (88-305)	4.00-12.00 (102-305)	4.49-12.00 (114-305)	4.95-12.00 (126-305)	
Max flange thickness - in (mm)	0.82 (21)	1.14 (29)	1.50 (38)	1.61 (41)	1.81 (46)	2.28 (58)	1.97 (50)	
Product dimensions - in (mm)	A	10.00 (254)	12.25 (311)	12.75 (324)	17.50 (445)	17.31 (440)	18.87 (479)	17.56 (446)
	B	7.68 (195)	8.50 (216)	9.45 (240)	11.81 (300)	13.58 (345)	15.55 (395)	16.75 (425)
	C	6.77 (171)	7.67 (195)	8.41 (214)	11.26 (286)	13.23 (336)	15.47 (393)	16.00 (406)
	D	4.02 (102)	4.33 (110)	4.90 (124)	6.34 (161)	7.28 (185)	8.66 (220)	7.50 (191)
	E	2.56 (65)	2.83 (72)	3.50 (89)	4.53 (115)	5.51 (140)	6.06 (154)	6.91 (176)
	F	1.77 (45)	2.05 (52)	2.48 (63)	3.35 (85)	4.13 (105)	4.60 (117)	5.24 (133)
	G	3.27 (83)	4.06 (103)	4.21 (107)	5.43 (138)	6.50 (165)	7.87 (200)	7.68 (195)
	H	1.18 (30)	1.52 (39)	1.52 (39)	2.24 (57)	2.68 (68)	3.15 (80)	4.49 (114)
	I	0.59 (15)	0.75 (19)	0.75 (19)	0.83 (21)	1.02 (26)	1.44 (37)	1.91 (49)
	J	0.94 (24)	1.26 (32)	1.26 (32)	1.34 (34)	1.65 (42)	1.89 (48)	3.35 (85)
	K	1.65 (42)	2.24 (57)	2.24 (57)	3.15 (80)	3.74 (95)	4.33 (110)	11.22 (285)
L	0.24 (6)	0.31 (8)	0.39 (10)	0.47 (12)	0.16 (4)	0.71 (18)	0.79 (20)	
M	0.67 (17)	0.82 (21)	1.02 (26)	1.18 (30)	1.43 (36)	1.67 (42)	1.73 (44)	
Minimum radius curve - ft (m)	3.25 (1.00)	2.95 (0.90)	3.28 (1.00)	3.60 (1.10)	4.26 (1.30)	4.59 (1.40)	5.57 (1.70)	
Net weight - lb (kg)	7.70 (3.50)	20.00 (9.00)	22.00 (10.00)	50.00 (23.00)	82.00 (37.00)	123 (56.00)	198.00 (90.00)	